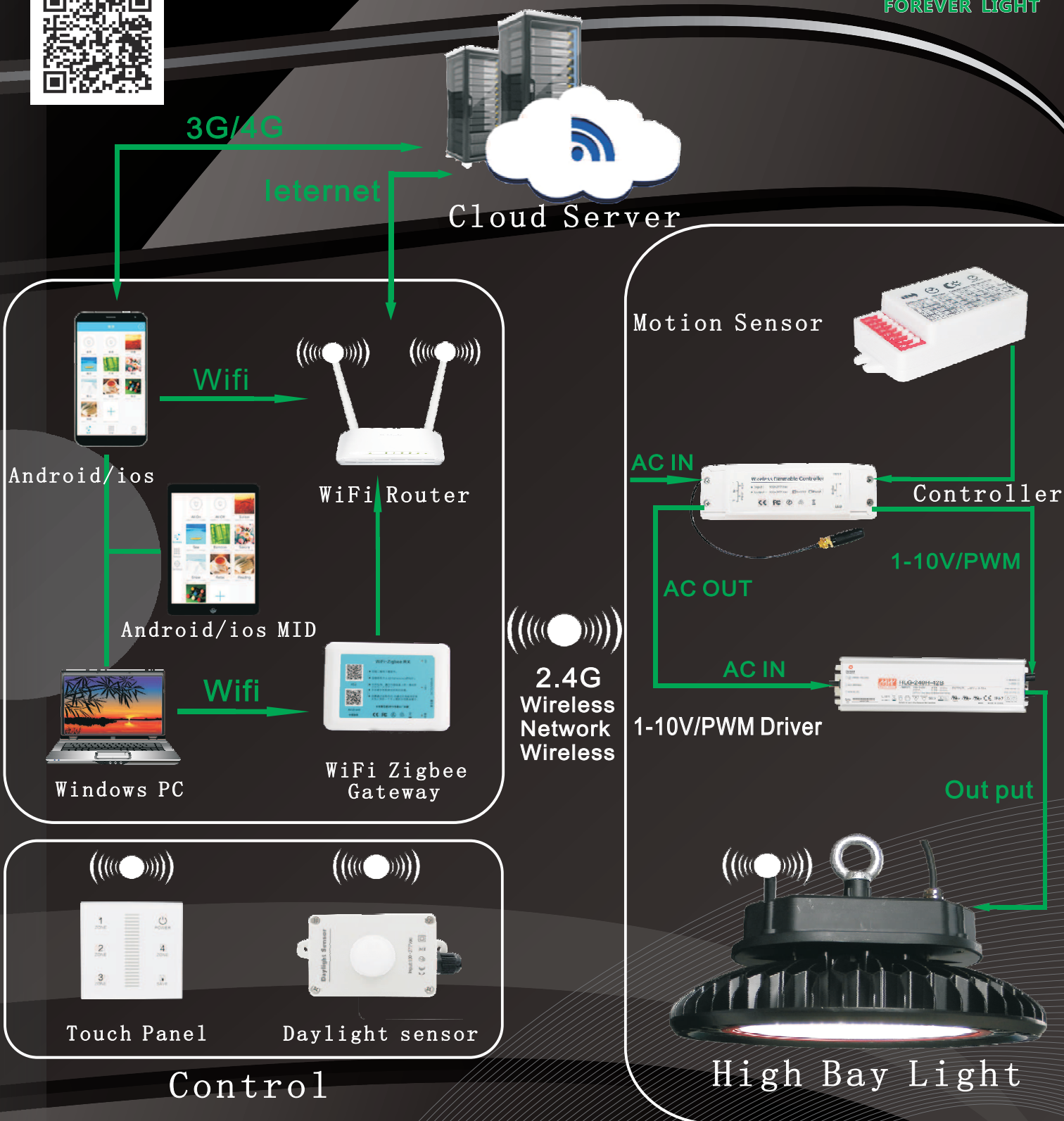


BOOTH NO.
3E-F15A



永欣照明
FOREVER LIGHT



Wireless intelligent control system

Lighting

深圳市永欣光电子有限公司
FOREVER LIGHT LTD

E-mail: sales@forever-lights.com
http://www.forever-lights.com

地址：深圳市光明新区公明街道合水口第四工业区A栋
Add: A Building, He shui kou forth industrial Zone, GongMing, GuangMing, ShenZhen, China



Forever light Ltd is a private enterprise that specializes in LEDs and LED lighting products development, production, sales and service, was founded in 2007, Covers an area of 5,000m² and has more than 100 employees.

We specialize in LED industrial lighting and outdoor lighting, with major products of LED High Bay, LED explosion-proof High Bay, LED Street Light, LED Flood Light, LED anti-corrosion Flood Light, LED High Mast Light and LED Canopy Light etc. We mainly export to international market with products approved by UL, DLC, TUV(GS-CE), PSE and SAA certificates etc. And we adhere to market-oriented and independent R&D mode.

In terms of quality assurance, we introduced ISO 9001 quality management system in 2009, and executed a strict quality control system from incoming materials, processing, finished product to shipping. Also established a quality assurance system including supplier management, process checking, reliability test, instrument calibration, customer service, etc. What's more, the company has developed systematic training programs for all the employees to enhance their work passion and professionalization.

LED lighting products meet today's energy saving and low-carbon trend, "Forever-light's man" are willing to provide 100% satisfied service to you with our excellent quality and cost-effective products. We will work with you together to illuminate every corner of the world, and do something for the health of the earth.



Office



Test Room



Show Room



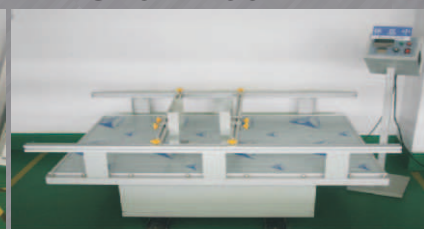
Water-Proof Test



Temperature Cycling Test



Salt Spray Test



Vibration Test

UFO High Bay Lights

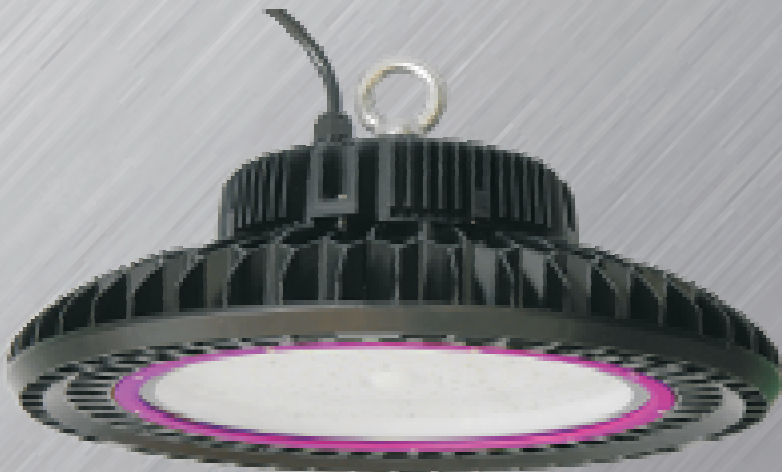
Product Features



Ip65



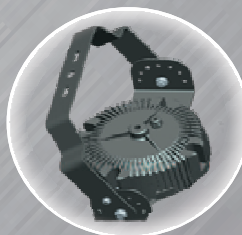
UFO-IV



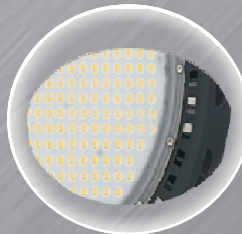
UFO-III



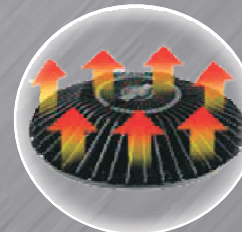
Meanwell HBG Serie Driver



Bracket Installation



Adopt optical PC lens
PHILIPS 3030 LED
Beam Angle
60° /90° /120°



The heat dissipation structure is designed with Al 6063 / ADC12

Electrical parameters

Input Voltage	AC90-305V	Color Rendering Index	Ra> 80
Frequency Range	50~60Hz	THD	<20%
Power Factor	>0.97	Color Temperature	3000/4000/5000/5700K
Power Efficiency	>93%	Working Temperature	-30℃ ~+45℃
LED Working Voltage	DC42~48V	Working Life-span	>50000H
Luminous Efficiency	>130lm / W	Power line	VDE 3×1.0mm2

Product Model

- XL-HB4G-100W XL-HB4G-160W XL-HB4G-200W XL-HB4G-240W
XL-HB3G-100W XL-HB3G-150W XL-HB3G-200W XL-HB3G-240W



UFO High Bay Lights Series

LED High Bay Lights

Explosion Proof

Ip65



ExnR II T4Gc



- The impact strength of its power box compliant to anti-explosion standard.
- Mean well driver
- Bridgelux chip COB LED and Beam angle is 100° /60°

• UFO-HBL-80W • UFO-HBL-100W • UFO-HBL-150W • UFO-HBL-200W

Linear High Bay



- Mean well or sonsen driver
- 6061 aluminum alloy shell
- Philips 3030 LED Beam angle :30° *70° / 60° *90° / 90° *120°

• XL-XTD-50W • XL-XTD-100W • XL-XTD-150W • XL-XTD-200W • XL-XTD-250W



- Unique cold forging integrated radiator, LED junction temperature <80 °C
- With Philips 3030LED, light efficiency> 110LM / W, Beam angle 100° ,60°
- The maximum power can be 200W, life span> 50000 hours

• XL-DYHBL-100W • XL-DYHBL-120W • XL-DYHBL-150W • XL-DYHBL-200W

LED High Bay Lights



LED Flood Lights

Star



Ip65



Power: 200-700W

Adopt ADC12 aluminum alloy radiator, modular independent heat dissipation design

MW power and Bridgelux chip

Beam angle: 25° 45° 60°

XL-STAR-200W

XL-STAR-240W

XL-STAR-300W

XL-STAR-350W

XL-STAR-400W

XL-STAR-500W

XL-STAR-600W

XL-STAR-700W

Wf2



Using aluminum alloy ADC12 die-casting shell, the surface anti-corrosion spray coating, anti-corrosion grade WF2

MEAN WELL Divre/ input 100-240VAC

Using Epistar COB

Beam angle 110° /50°

XL-002115FL10WB

XL-002225FL30WB

XL-002225FL50WB

XL-0022360FL80WB

DOB



Smart linear constant current IC control ,light integrated with eclectrics, more stable function

Inside with surge protective circuits that can against 4KV surge.

over voltage protection ,
over temperature protection ,
over current protection

XL-FLO-10W

XL-FLO-20W

XL-FLO-30W

XL-FLO-50W

XL-FLO-80W

LED Floodlights Series



LED Flood Lights

Product Features

Ip65



Single module



Three modules



Two modules



Four modules

- Adopting Cree COB LED, luminaire efficiency > 100lm/w, CRI > 80Ra
- Meanwell driver, Input voltage: 90 – 305VAC;
- ADC12 Aluminum alloy die casting shell, good mechanical strength and heat dissipation.
- Beam angle : 60° / 90° / 120°

Electrical parameters

Input Voltage	AC90-305V	Color Rendering Index	Ra > 80
Frequency Range	50~60Hz	THD	< 20%
Power Factor	> 0.96	Color Temperature	3000/4000/5000/5700K
Power Efficiency	> 92%	Working Temperature	-30°C ~ +45°C
LED Working Voltage	DC36~42V	Working Life-span	> 50000H
Luminous Efficiency	> 100lm / W	Power line	VDE 3 × 1.0mm ²

Product Model

- Faeron-FL50W • Faeron-FL80W • Faeron-FL100W • Faeron-FL120W
- Faeron-FL150W • Faeron-FL200W • Faeron-FL240W • Faeron-FL300W

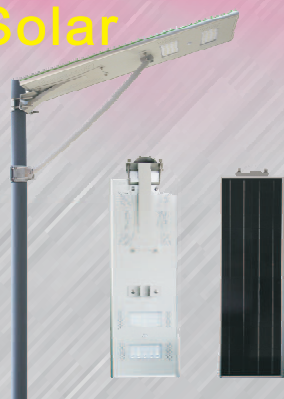
FAETON Series



LED Street Lights

Product Features

Solar



Quality USA Bridgelux LED light source

Quality aluminum alloy, not only with good appearance, Waterproof and anticorrosion is strong point.

Top intelligent PIR motion sensor, it could adjust suitable mode base on human activity automatically, make longer backup time



Ip65

LDM



Sonsen Driver

Philips 3030 SMD LED

Beam Angle
75 * 145

HTC



MEAN WELL Driver

Quality Bridgelux COB LED

Beam Angle 130 / 140 / 150

Electrical parameters

Input Voltage	AC90-305V	Color Rendering Index	Ra>80
Frequency Range	50~60Hz	THD	<20%
Power Factor	>0.97	Color Temperature	3000/4000/5000/5700K
Power Efficiency	>93%	Working Temperature	-30℃ ~+45℃
LED Working Voltage	DC36~48V	Working Life-span	>50000H
Luminous Efficiency	>100lm / W	Power line	VDE 3×1.0mm ²

Product Model

XL-HTC03-30W	XL-HTC02-100W	XL-HTC01-150W	XL-HTC01-180W
XL-LDM-30W	XL-LDM-80W	XL-LDM-120W	XL-LDM-150W
XL-TYN-8W	XL-TYN-30W	XL-TYN-50W	XL-TYN-80W

LED Street Lights

Product Features



Daylight sensor



MeanWell HLG Series



Ip65



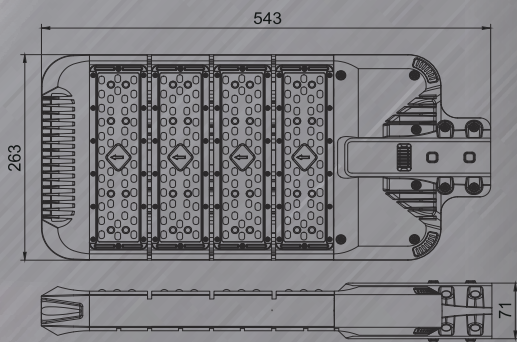
CREE XTE 3535 LED
LUMILEDS 3030 LED



CREE XTE LED - Integrated 28pcs lens
Beam Angles : 80° x 150° / 90° x 120°
With American type III Medium standard
for street optical lens



LUMILEDS 3030 LED - Integrated 64pcs lens
Beam Angles : 80° x 150° / 90° x 120°
With American type II short standard
for street optical lens.



Electrical parameters

Input Voltage	AC90-305V	Color Rendering Index	Ra>80
Frequency Range	50~60Hz	THD	<20%
Power Factor	>0.97	Color Temperature	3000/4000/5000/5700K
Power Efficiency	>93%	Working Temperature	-30℃ ~+45℃
LED Working Voltage	DC42~48V	Working Life-span	>50000H
Luminous Efficiency	>130lm / W	Power line	VDE 3×1.0mm2

Product Model

✦ XL-SLN-50W ✦ XL-SLN-80W ✦ XL-SLN-100W
✦ XL-SLN-120W ✦ XL-SLN-150W ✦ XL-SLN-200W ✦ XL-SLN-240W

Transformers Series

