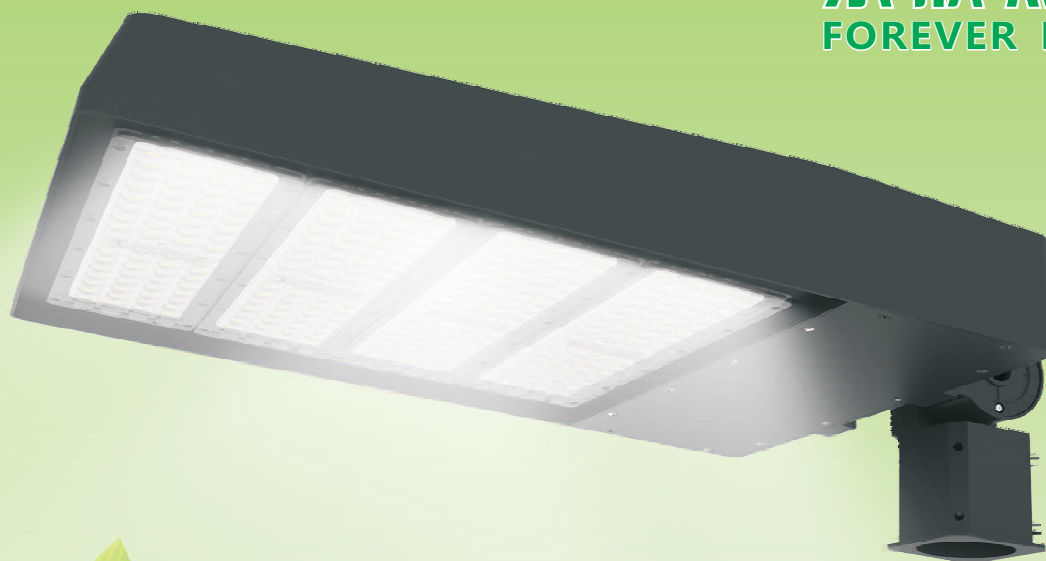


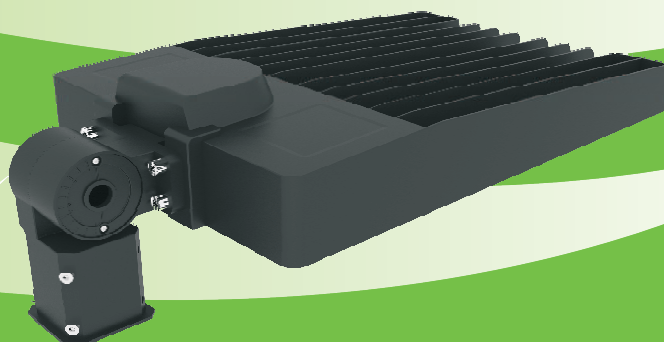
2017



永欣照明  
FOREVER LIGHT



LED STREET LIGHT  
LED 路灯  
LED HIGH BAY LIGHT  
LED 工矿灯  
LED FLOODLIGHT  
LED 泛光灯



深圳市永欣光电子有限公司  
FOREVER LIGHT LTD



Forever light Ltd is a private enterprise that specializes in LEDs and LED lighting products development, production, sales and service, was founded in 2007 ,Covers an area of 5,000m<sup>2</sup> and has more than 100 employees.

We specialize in LED industrial lighting and outdoor lighting , with major products of LED High Bay , LED explosion-proof High Bay , LED Street Light , LED Flood Light , LED anti-corrosion Flood Light , LED High Mast Light and LED Canopy Light etc. We mainly export to international market with products approved by UL , DLC , TUV(GS-CE) , PSE and SAA certificates etc. And we adhere to market-oriented and independent R&D mode.

In terms of quality assurance, we introduced ISO 9001 quality management system in 2009, and executed a strict quality control system from incoming materials, processing, finished product to shipping. Also established a quality assurance system including supplier management, process checking, reliability test, instrument calibration, customer service, etc. What' s more, the company has developed systematic training programs for all the employees to enhance their work passion and professionalization.

LED lighting products meet today' s energy saving and low-carbon trend, "Forever-light' s man" are willing to provide 100% satisfied service to you with our excellent quality and cost-effective products. We will work with you together to illuminate every corner of the world, and do something for the health of the earth.



Office



Test Room



Show Room



Water-Proof Test



Temperature Cycling Test

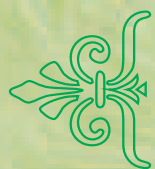


Salt Spray Test

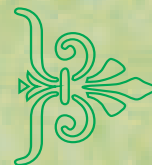


Vibration Test





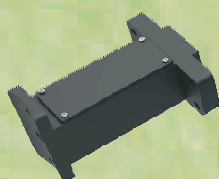
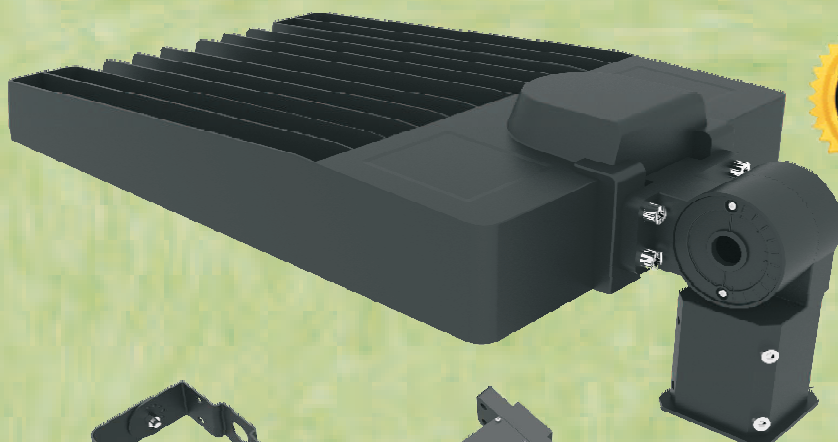
# Shoe Box Light



## Product Features



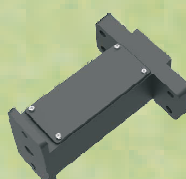
Ip65



Straight mounting  
to round pole

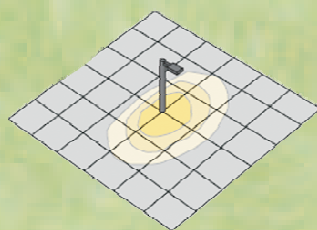


Swivile mounting

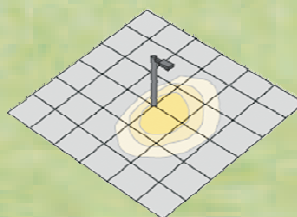


Straight mounting  
to a square pole

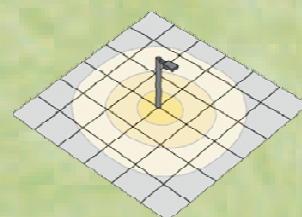
Slip filter mounting  
to round pole



TYP-II



TYP-III



TYP-VS

## Electrical parameters

Input Voltage	AC90-305V	Color Rendering Index	Ra> 70
Frequency Range	50~60Hz	THD	<20%
Power Factor	>0.97	Color Temperature	3000/4000/5000/5700K
Power Efficiency	>93%	Working Temperature	-30℃ ~+45℃
LED Working Voltage	DC36~48V	Working Life-span	>50000H
Luminous Efficiency	>130lm / W	Power line	VDE 3×1.0mm2

## Product Model

XL-XHD-75-100W	XL-XHD-150-200W	XL-XHD-300-400W	
----------------	-----------------	-----------------	--

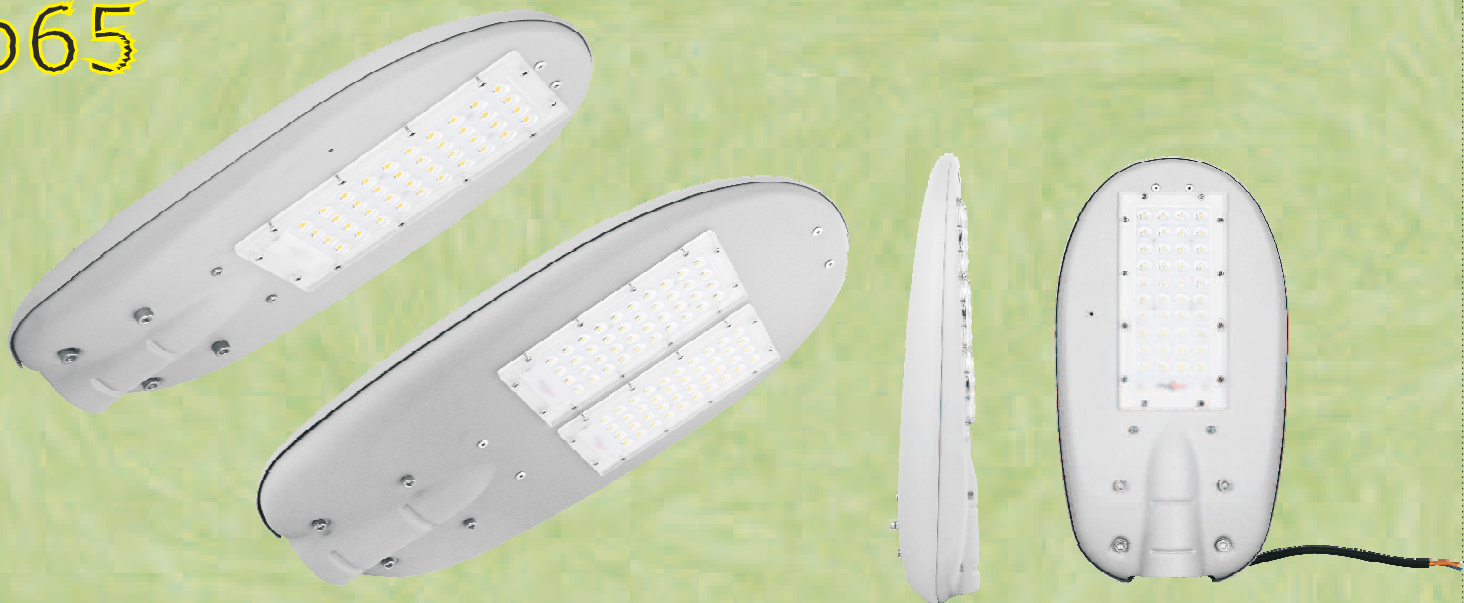


# Mini Street Light

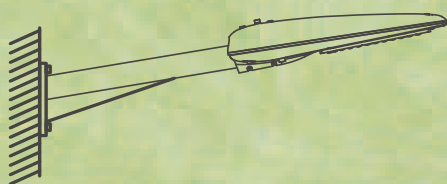
## Product Features



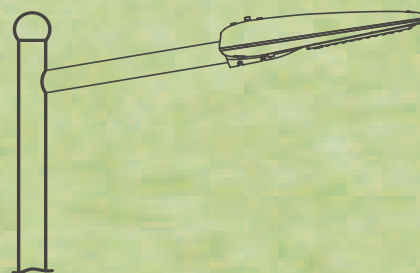
Ip65



Wall Mounting



Pole Mounting



## Electrical parameters

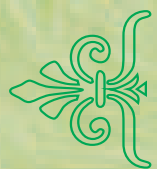
Input Voltage	AC90-305V	Color Rendering Index	Ra> 70
Frequency Range	50~60Hz	THD	<20%
Power Factor	>0.97	Color Temperature	3000/4000/5000/5700K
Power Efficiency	>93%	Working Temperature	-30℃ ~+45℃
LED Working Voltage	DC30~48V	Working Life-span	>50000H
Luminous Efficiency	>130lm / W	Power line	VDE 3×1.0mm2

## Product Model

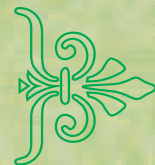
XL-MNS3030-30W	XL-MNS3030-50W	XL-MNS3030-75W	
----------------	----------------	----------------	--







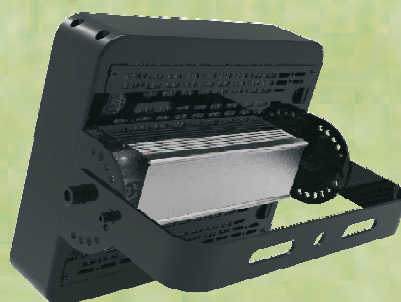
# Tunnel Light



## Product Features



Ip65

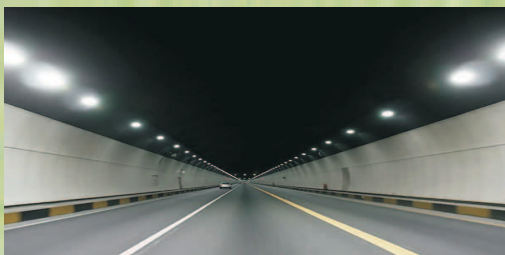


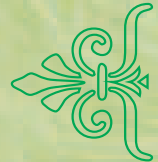
## Electrical parameters

Input Voltage	AC90-305V	Color Rendering Index	Ra> 80
Frequency Range	50~60Hz	THD	<20%
Power Factor	>0.97	Color Temperature	3000/4000/5000/5700K
Power Efficiency	>92%	Working Temperature	-30℃ ~+45℃
LED Working Voltage	DC48~50V	Working Life-span	>50000H
Luminous Efficiency	>130lm / W	Power line	VDE 3×1.0mm2

## Product Model

XL-HBLM-50W	XL-HBLM-100W	XL-HBLM-150W	XL-HBLM-200W
XL-HBLM-240W			





# SQUARE HIGH BAY



## Product Features



Ip65

160lm/w



IK08

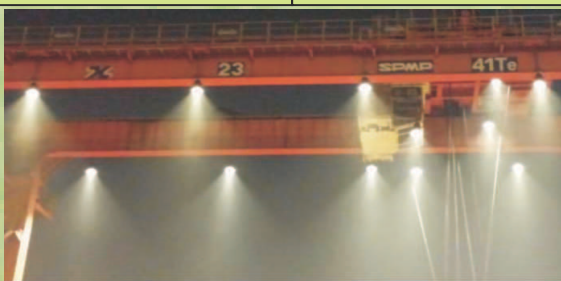


## Electrical parameters

Input Voltage	AC90-305V	Color Rendering Index	Ra>80
Frequency Range	50~60Hz	THD	<20%
Power Factor	>0.97	Color Temperature	3000/4000/5000/5700K
Power Efficiency	>93%	Working Temperature	-30℃ ~+45℃
LED Working Voltage	DC48~54V	Working Life-span	>50000H
Luminous Efficiency	>160lm / W	Power line	VDE 3×1.0mm2

## Product Model

XL-HBS-50W	XL-HBS-100W	XL-HBS-150W	XL-HBS-200W
XL-HBS-240W			



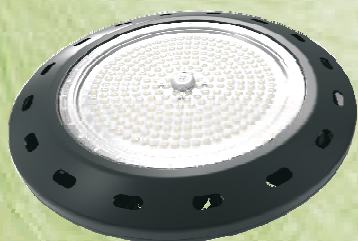


# UFO-V HIGH BAY

## Product Features



Ip65

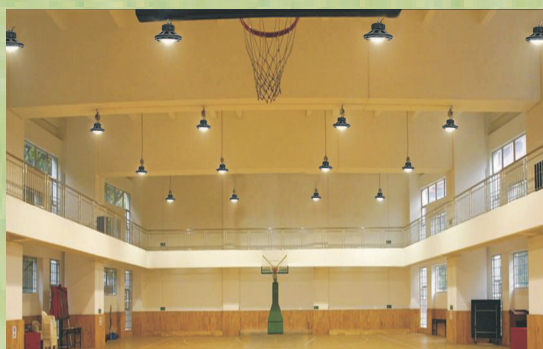


## Electrical parameters

Input Voltage	AC130-305V	Color Rendering Index	Ra> 80
Frequency Range	50~60Hz	THD	<20%
Power Factor	>0.97	Color Temperature	3000/4000/5000/5700K
Power Efficiency	>93%	Working Temperature	-30℃ ~+45℃
LED Working Voltage	DC80~90V	Working Life-span	>50000H
Luminous Efficiency	>130lm / W	Beam angle	60    90    120

## Product Model

XL-HB5G-80W	XL-HB5G-100W	XL-HB5G-150W	XL-HB5G-200W
-------------	--------------	--------------	--------------





永欣照明  
FOREVER LIGHT



地址：深圳市光明新区公明街道合水口第四工业区A 栋

Add : A Building, He shui kou forth industrial Zone, GongMing, GuangMing, ShenZhen, China

E-mail:sales@forever-lights.com <http://www.forever-lights.com>