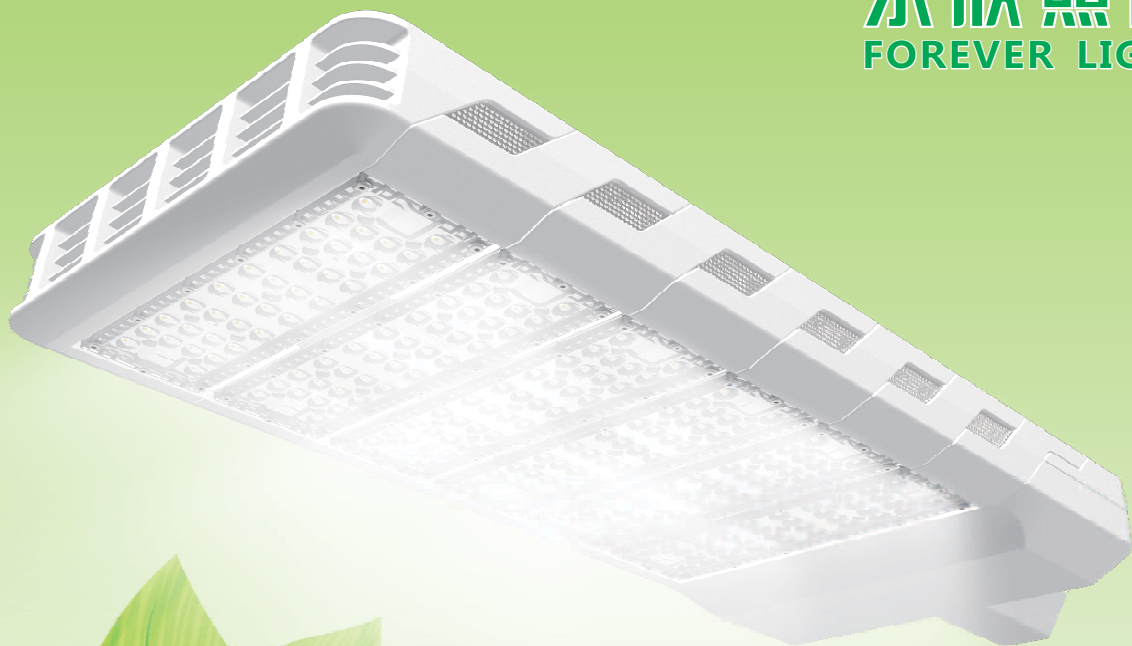


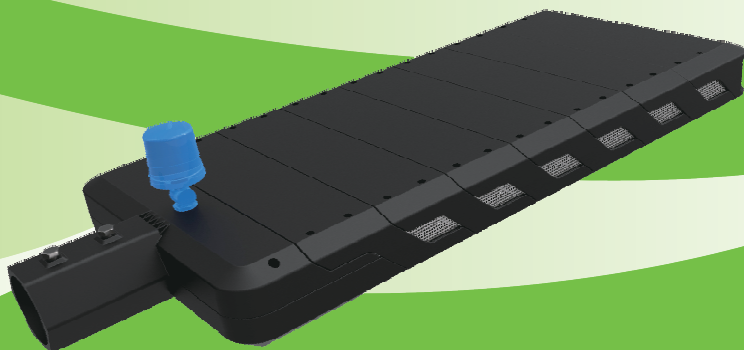
2017-II



永欣照明  
FOREVER LIGHT



LED STREET LIGHT  
LED 路灯  
LED HIGH BAY LIGHT  
LED 工矿灯  
LED FLOODLIGHT  
LED 泛光灯



深圳市永欣光电子有限公司  
FOREVER LIGHT LTD



Forever light Ltd is a private enterprise that specializes in LEDs and LED lighting products development, production, sales and service, was founded in 2007 ,Covers an area of 5,000m<sup>2</sup> and has more than 100 employees.

We specialize in LED industrial lighting and outdoor lighting , with major products of LED High Bay , LED explosion-proof High Bay , LED Street Light , LED Flood Light , LED anti-corrosion Flood Light , LED High Mast Light and LED Canopy Light etc. We mainly export to international market with products approved by UL , DLC , TUV(GS-CE) , PSE and SAA certificates etc. And we adhere to market-oriented and independent R&D mode.

In terms of quality assurance, we introduced ISO 9001 quality management system in 2009, and executed a strict quality control system from incoming materials, processing, finished product to shipping. Also established a quality assurance system including supplier management, process checking, reliability test, instrument calibration, customer service, etc. What' s more, the company has developed systematic training programs for all the employees to enhance their work passion and professionalization.

LED lighting products meet today' s energy saving and low-carbon trend, "Forever-light' s man" are willing to provide 100% satisfied service to you with our excellent quality and cost-effective products. We will work with you together to illuminate every corner of the world, and do something for the health of the earth.



Business Office



Test Room



Show Room



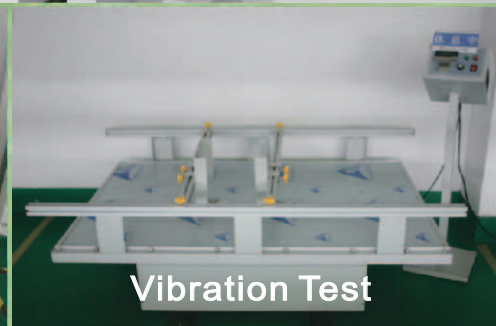
Water-Proof Test



Temperature Cycling Test



Salt Spray Test



Vibration Test

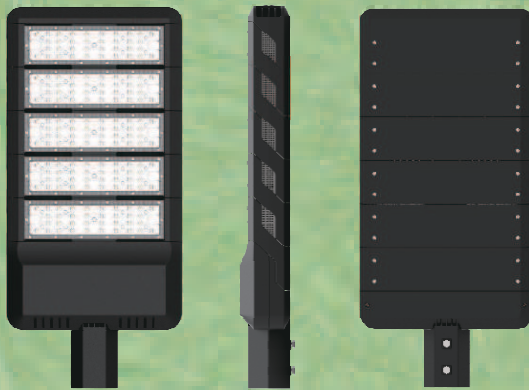
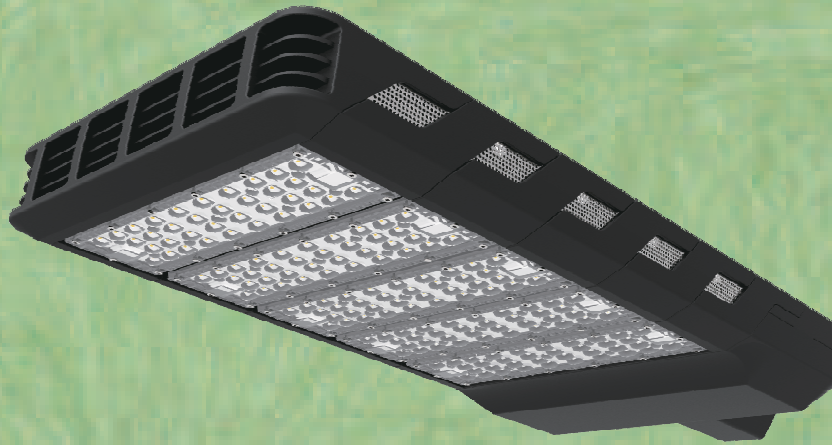


# Transformers-II



## Product Features

Ip65



## Light Angle

**5050** light source  
75°X150° 150LM/W

**3030** light source  
30°/60°/90°/120°/160° 130LM/W

TYP-I TYP-II TYP-III TYP-IV

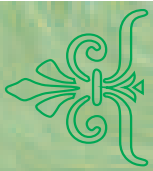
## Electrical parameters

Input Voltage	AC90-305V	Color Rendering Index	Ra> 70
Frequency Range	50~60Hz	THD	<20%
Power Factor	>0.97	Color Temperature	3000/4000/5000/5700K
Power Efficiency	>93%	Working Temperature	-30°C ~+45°C
LED Working Voltage	DC48~54V	Working Life-span	>50000H
Luminous Efficiency	>130lm / W	Power line	VDE 3×1.0mm2

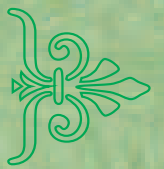
## Product Model

XL-SLN2-60W	XL-SLN2-100W	XL-SLN2-150W	XL-SLN2-200W
XL-SLN2-240W	XL-SLN2-300W		





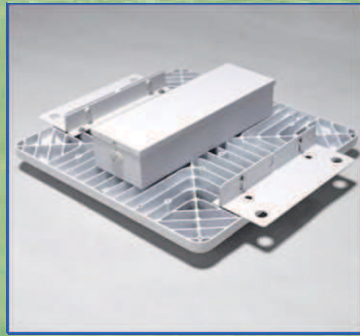
# Canopy Light



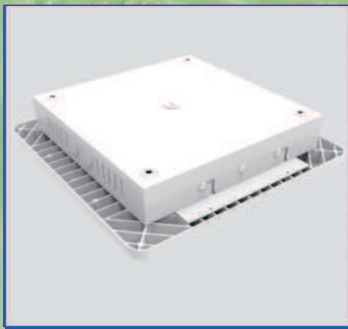
## Product Features



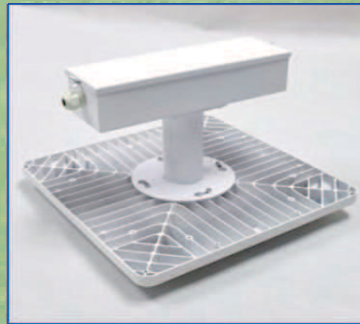
### Ip65



Embedded Mounting



Ceiling Mounting



Pole type Mounting



## Electrical parameters

Input Voltage	AC90-305V	Color Rendering Index	Ra> 80
Frequency Range	50~60Hz	THD	<20%
Power Factor	>0.97	Color Temperature	3000/4000/5000/5700K
Power Efficiency	>93%	Working Temperature	-30°C ~+45°C
LED Working Voltage	DC40~48V	Working Life-span	>50000H
Luminous Efficiency	>130lm / W	Power line	VDE 3×1.0mm <sup>2</sup>

## Product Model

XL-YZD-50W	XL-YZD-80W	XL-YZD-100W	XL-YZD-120W	XL-YZD-150W
------------	------------	-------------	-------------	-------------





# STAR HIGH POLE



## Product Features

Ip65



### Modular structure

## Light Angle

7070 light source

25°/36°/45°/60° 120LM/W

## Electrical parameters

Input Voltage	AC90-305V	Color Rendering Index	Ra>70
Frequency Range	50~60Hz	THD	<20%
Power Factor	>0.97	Color Temperature	3000/4000/5000/5700K
Power Efficiency	>92%	Working Temperature	-30°C ~+45°C
LED Working Voltage	DC48~54V	Working Life-span	>50000H
Luminous Efficiency	>120lm / W	Power line	VDE 3×2.5mm2

## Product Model

XL-STAR-200W	XL-STAR-300W	XL-STAR-360W	XL-STAR-400W
XL-STAR-480W	XL-STAR-600W	XL-STAR-700W	XL-STAR-1000W

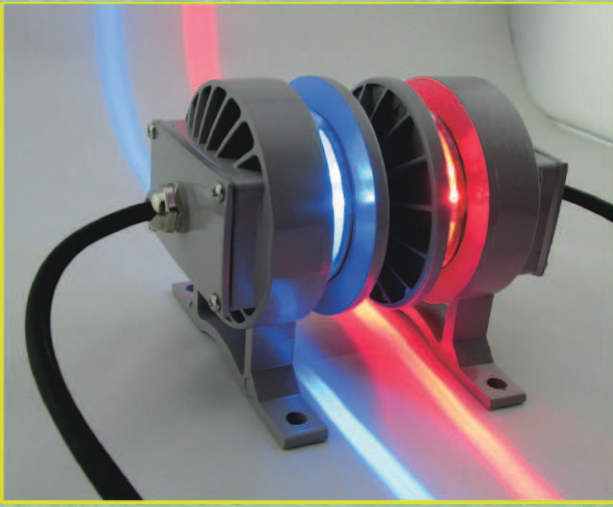


星牌照明

# Landscape Lighting

## Product Features

Ip65 CE



## Windows lamp



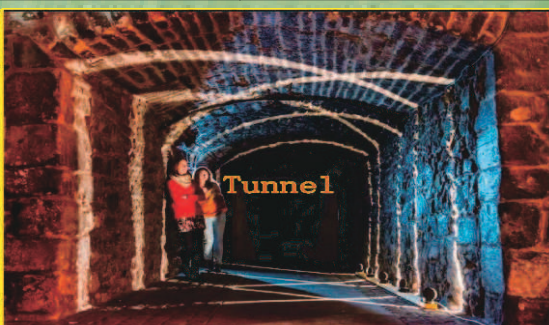
## LED Wall Washer

## Electrical parameters

Input Voltage	AC90-305V	Color Rendering Index	/
Frequency Range	50~60Hz	THD	<20%
Power Factor	>0.97	Color Temperature	R/G/B/W/Y
Power Efficiency	>90%	Working Temperature	-30°C ~+45°C
LED Working Voltage	DC9~12V	Working Life-span	>50000H
Luminous Efficiency	>100lm / W	Power line	VDE 3×1.0mm2

## Product Model

XL-CTDA-10W	XL-CTDB-10W	XL-CTDC-10W	
-------------	-------------	-------------	--



# Faeton Flood Light

## Product Features

Ip65



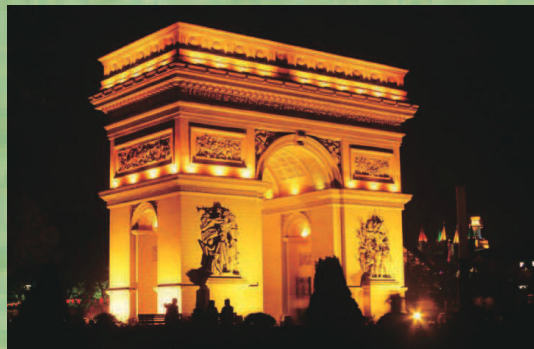
**5050** light source

## Electrical parameters

Input Voltage	AC90-305V	Color Rendering Index	Ra>80
Frequency Range	50~60Hz	THD	<20%
Power Factor	>0.97	Color Temperature	3000/4000/5000/5700K
Power Efficiency	>92%	Working Temperature	-30°C ~+45°C
LED Working Voltage	DC50~54V	Working Life-span	>50000H
Luminous Efficiency	>120lm/W	Beam angle	60° 90° 120°

## Product Model

Faeton-FL50/80W Faeton-FL100/150W Faeton-FL200/240W Faeton-FL300/320W





永欣照明  
FOREVER LIGHT



Single module



Double modules



Three modules



Four modules

地址：深圳市光明新区公明街道合水口第四工业区A栋

Add : A Building, He shui kou forth industrial Zone, GongMing, GuangMing, ShenZhen, China

E-mail:sales@forever-lights.com <http://www.forever-lights.com>